

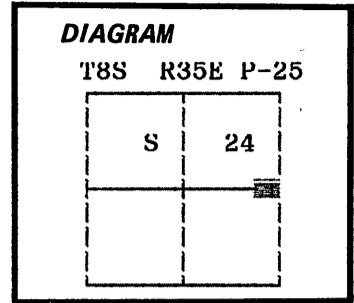
CERTIFIED RECORD OF LAND CORNER MONUMENTATION

History of original corner establishment:

Corner originally established by Herman D. Gradon under GLO contract number 499, dated March 11, 1884. Surveyor General record states:

Set a post 3 ft long 3 ins square 24 ins in ground for ¼ sec cor. marked ¼S on W face, from which:

A Pine 11 ins diam bears S56°W, 119 lks dist marked ¼S BT
 A Pine 7 ins diam bears N43°W, 21 lks dist marked ¼S BT



No record of subsequent monumentation found in Grant County survey records.
 Description of corner evidence found:

No evidence of the original corner or its accessories were found.
 Area has been logged heavily.

See map of survey dated September, 1987. *NO. 1019*

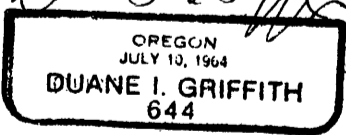
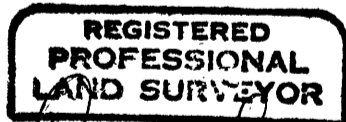
Description of monument and accessories established to perpetuate the original location of this corner: At position determined by survey, I set a 2½" x 30" aluminum pipe with aluminum cap marked as shown, 29 inches in the ground, from which;

New Bearing Trees:
 A 28 inch diameter Ponderosa Pine bears S1°W, 10.57 feet marked ¼ S24 BT
 A 20 inch diameter Douglas Fir bears N36°W, 67.69 feet marked ¼ S24 BT

Raised a small mound of stone around monument.
 Painted a 6 inch red band around all BT's and attached 54-3 and 54-9 signs.
 Set a steel fencepost approximately 5 feet South with 54-9 sign attached.

I hereby certify that the above corner point was perpetuated as hereon described on August 17, 1987.

Witness: Jeff Petersen



I used a steel tape and magnetic compass in the establishment of new accessories. I used 17° East magnetic declination and the distances are to a 50d spike driven in the right side of the root crown. I attached a brass washer marked OPLS 644 to the BT blaze.

Office of Surveyor County of Grant
 State of Oregon, I hereby certify that the within instrument was filed in this office for record on the 22 day of Oct, 1987
Robert D. Baggett by _____
 (COUNTY OFFICIAL) (DEPUTY)